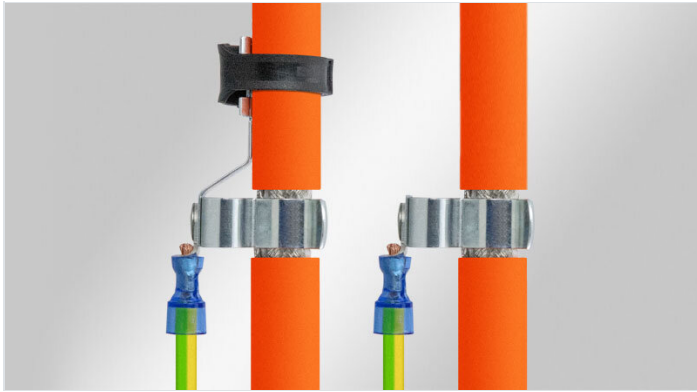


EMC shield clamps on cable lugs

with or without integrated cable fixing function



EMC shield clamps are used, where the shield of cables must be connected to the earth potential. They are easy to use and effective in earthing single cable shields. The shield clamps are mounted on ring cable lugs which can be crimped on PE conductors.

The RCLZ-M shield clamps allow a secure fixing of the cable with cable ties.

The size of the ring cable lug diameter is shown by differing colours:

- Red: 0.5 - 1.5 mm²
- Blue: 1.0 - 2.5 mm²
- Yellow: 4 - 6 mm²



Specifications

Material	Shield clamp: Spring steel, zinc plated Mounting foot: Polycarbonate
Operating temperature	-30 C° to 120 C°
Properties	vibration proof
Mounting options	Clamping

Advantages & benefits

- Large contact area
- The spring design requires no adjustments and will permanently maintain contact to the cable shield
- Shock and vibration resistant, maintenance free
- UL listed

Product types & sizes

RCL 0.5-1.5mm²|SKL
1.5-3



Part No.	36296.1
EAN	4251269319655
PU	25
No. of shield clamps	1
For max. no. of cables	1
Min. shield diam.	1.5 mm
Max. shield diam.	3 mm


Length	20 mm
Width	11.8 mm
Height	17.8 mm


RCL 1.0-2.5mm²|SKL
1.5-3





Part No.	36297.1
EAN	4251269319679
PU	25
No. of shield clamps	1
For max. no. of cables	1
Min. shield diam.	1.5 mm
Max. shield diam.	3 mm


Length	21 mm
Width	11.8 mm
Height	18.2 mm


RCL 4-6mm² SKL 1.5-3 	Part No.	36298.1	Length	24 mm
	EAN	4251269319693	Width	11.8 mm
	PU	25	Height	19.1 mm
	No. of shield clamps	1		
	For max. no. of cables	1		
	Min. shield diam.	1.5 mm		
	Max. shield diam.	3 mm		

RCL 0.5-1.5mm² MSKL 3-12 	Part No.	36296.2	Length	20 mm
	EAN	4251269319662	Width	14.9 mm
	PU	25	Height	25.4 mm
	No. of shield clamps	1		
	For max. no. of cables	1		
	Min. shield diam.	3 mm		
	Max. shield diam.	12 mm		

RCL 1.0-2.5mm² MSKL 3-12 	Part No.	36297.2	Length	21 mm
	EAN	4251269319686	Width	14.9 mm
	PU	25	Height	25.8 mm
	No. of shield clamps	1		
	For max. no. of cables	1		
	Min. shield diam.	3 mm		
	Max. shield diam.	12 mm		

RCL 4-6mm² MSKL 3-12 	Part No.	36298.2	Length	24 mm
	EAN	4251269319709	Width	14.9 mm
	PU	25	Height	26.7 mm
	No. of shield clamps	1		
	For max. no. of cables	1		
	Min. shield diam.	3 mm		
	Max. shield diam.	12 mm		

RCLZ-M 0.5-1.5mm² MSKL 3-12 	Part No.	36303.2	Length	45.5 mm
	EAN	4251269322341	Width	15 mm
	PU	25	Height	26 mm
	No. of shield clamps	1		
	For max. no. of cables	1		
	Min. shield diam.	3 mm		
	Max. shield diam.	12 mm		

RCLZ-M 1.0-2.5mm² MSKL 3-12 	Part No.	36302.2	Length	46.5 mm
	EAN	4251269322334	Width	15 mm
	PU	25	Height	26 mm
	No. of shield clamps	1		
	For max. no. of cables	1		
	Min. shield diam.	3 mm		
	Max. shield diam.	12 mm		

RCLZ-M 4-6 mm²MSKL
3-12



Part No.	36301.2
EAN	4251269322327
PU	25
No. of shield clamps	1
For max. no. of cables	1
Min. shield diam.	3 mm
Max. shield diam.	12 mm

Length	49.5 mm
Width	15 mm
Height	27 mm

□