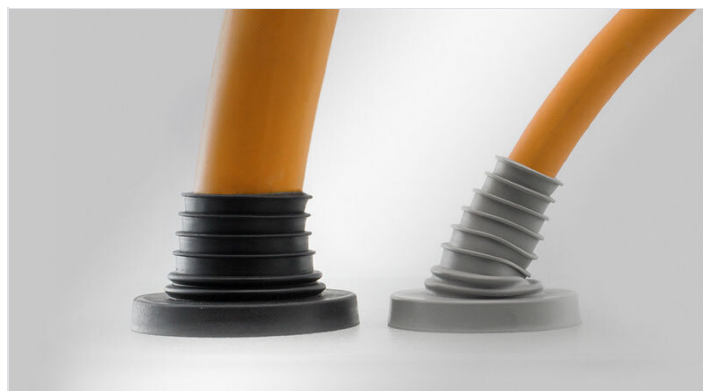


# KEL-DPF pyramid cable entry grommets

for single cables with diameters up to 70 mm, M25 - M85 / IP66 / IP68 / UL Type 12/4X

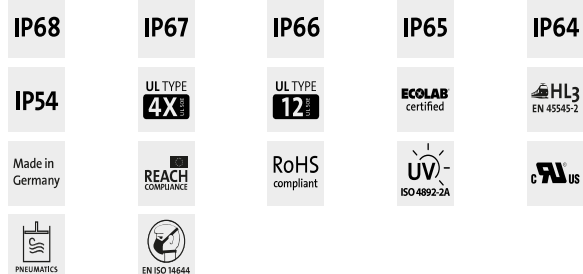


The KEL-DPF was developed particularly for routing large or unknown sizes of cables into a switch cabinet or machine (max. cable diameter 70 mm). Due to the flexibility and unique pyramid shape, cable entry and flexible positioning is much easier compared to using conventional cable glands. Also perfect for bundling or restraining large cables.

Cutting of DPF grommets: Cable diameter less 25%. The corresponding diameters are marked on the grommet.

It is recommended that additional strain relief be provided for cables using cable ties.

For mounting the KEL-DPF sizes 75 and 85 we offer suitable wrenches with widths for M75 and M85 plastic locknuts.



## Specifications

<b>IP rating (certified acc. to EN 60529)</b>	IP68, IP67, IP66, IP65, IP64, IP54
<b>UL Type (certified acc. to UL 50E)</b>	UL Type 4X, UL Type 12
<b>Material</b>	Elastomer Base frame: Polyamide
<b>Flame class</b>	UL94-V0, self-extinguishing
<b>Operating temperature</b>	-40 C° to 100 C°
<b>Properties</b>	silicone free, halogen free
<b>Mounting options</b>	Fasten with locknut

## Advantages & benefits

- Quick assembly without tools
- It is possible to install rigid cables at angles
- Suitable for metric cut-outs
- Certified protection IP66/IP68 (acc. to EN 60529)
- Hexagonal locknut included in the delivery

## Product types & sizes

KEL-DPF 25|3-12 gy



Part No.	<b>42652</b>	Mounting height	<b>43.9 mm</b>
EAN	<b>4251269309083</b>	Cut-out size, round	<b>25.3 mm</b>
PU	<b>5</b>	Cut-out size, metric	<b>M25</b>
For max. no. of cables	<b>1</b>	Thread	<b>M25 x 1,5</b>
Colour	<b>grau (ähnlich RAL 7035)</b>	Thread length	<b>14 mm</b>
Height	<b>54.9 mm</b>	Clamping range	<b>1 x 3 - 12 mm</b>
External diameter	<b>39 mm</b>		

**KEL-DPF 25|3-12 bk**

Part No. **50652**  
 EAN **4251269315039**  
 PU **5**  
 For max. no. of cables **1**  
 Colour **schwarz**  
 Height **54.9 mm**  
 External diameter **39 mm**

Mounting height **43.9 mm**  
 Cut-out size, round **25.3 mm**  
 Cut-out size, metric **M25**  
 Thread **M25 x 1,5**  
 Thread length **14 mm**  
 Clamping range **1 x 3 - 12 mm**

**KEL-DPF 32|6-18 gy**

Part No. **42653**  
 EAN **4251269309090**  
 PU **5**  
 For max. no. of cables **1**  
 Colour **grau (ähnlich RAL 7035)**  
 Height **60.4 mm**  
 External diameter **46 mm**

Mounting height **49.4 mm**  
 Cut-out size, round **32.3 mm**  
 Cut-out size, metric **M32**  
 Thread **M32 x 1,5**  
 Thread length **14 mm**  
 Clamping range **1 x 6 - 18 mm**

**KEL-DPF 32|6-18 bk**

Part No. **50653**  
 EAN **4251269315046**  
 PU **5**  
 For max. no. of cables **1**  
 Colour **schwarz**  
 Height **60.4 mm**  
 External diameter **46 mm**

Mounting height **49.4 mm**  
 Cut-out size, round **32.3 mm**  
 Cut-out size, metric **M32**  
 Thread **M32 x 1,5**  
 Thread length **14 mm**  
 Clamping range **1 x 6 - 18 mm**

**KEL-DPF 40|12-27 gy**

Part No. **42654**  
 EAN **4251269309106**  
 PU **5**  
 For max. no. of cables **1**  
 Colour **grau (ähnlich RAL 7035)**  
 Height **65.9 mm**  
 External diameter **39 mm**

Mounting height **54.9 mm**  
 Cut-out size, round **40.4 mm**  
 Cut-out size, metric **M40**  
 Thread **M40 x 1,5**  
 Thread length **14 mm**  
 Clamping range **1 x 12 - 27 mm**

**KEL-DPF 40|12-27 bk**

Part No. **50654**  
 EAN **4251269315053**  
 PU **5**  
 For max. no. of cables **1**  
 Colour **schwarz**  
 Height **65.9 mm**  
 External diameter **39 mm**

Mounting height **54.9 mm**  
 Cut-out size, round **40.4 mm**  
 Cut-out size, metric **M40**  
 Thread **M40 x 1,5**  
 Thread length **14 mm**  
 Clamping range **1 x 12 - 27 mm**

**KEL-DPF 50|22-36 gy**

Part No. **42655**  
 EAN **4251269309113**  
 PU **5**  
 For max. no. of cables **1**  
 Colour **grau (ähnlich RAL 7035)**  
 Height **65.9 mm**  
 External diameter **64 mm**

Mounting height **54.9 mm**  
 Cut-out size, round **50.4 mm**  
 Cut-out size, metric **M50**  
 Thread **M50 x 1,5**  
 Thread length **14 mm**  
 Clamping range **1 x 22 - 36 mm**

**KEL-DPF 50|22-36 bk**

Part No. **50655**  
 EAN **4251269315060**  
 PU **5**  
 For max. no. of cables **1**  
 Colour **schwarz**  
 Height **65.9 mm**  
 External diameter **64 mm**

Mounting height **54.9 mm**  
 Cut-out size, round **50.4 mm**  
 Cut-out size, metric **M50**  
 Thread **M50 x 1,5**  
 Thread length **14 mm**  
 Clamping range **1 x 22 - 36 mm**

**KEL-DPF 63|27-50 gy**

Part No. **42656**  
 EAN **4251269309120**  
 PU **5**  
 For max. no. of cables **1**  
 Colour **grau (ähnlich RAL 7035)**  
 Height **82.4 mm**  
 External diameter **77 mm**

Mounting height **71.4 mm**  
 Cut-out size, round **63.4 mm**  
 Cut-out size, metric **M63**  
 Thread **M63 x 1,5**  
 Thread length **14 mm**  
 Clamping range **1 x 27 - 50 mm**

**KEL-DPF 63|27-50 bk**

Part No. **50656**  
 EAN **4251269315077**  
 PU **5**  
 For max. no. of cables **1**  
 Colour **schwarz**  
 Height **82.4 mm**  
 External diameter **77 mm**

Mounting height **71.4 mm**  
 Cut-out size, round **63.4 mm**  
 Cut-out size, metric **M63**  
 Thread **M63 x 1,5**  
 Thread length **14 mm**  
 Clamping range **1 x 27 - 50 mm**

**KEL-DPF 75|39-60 gy**

Part No. **42657**  
 EAN **4251269316975**  
 PU **1**  
 For max. no. of cables **1**  
 Colour **grau (ähnlich RAL 7035)**  
 Height **82.4 mm**  
 External diameter **89 mm**

Mounting height **71.4 mm**  
 Cut-out size, round **75.5 mm**  
 Cut-out size, metric **M75**  
 Thread **M75 x 1,5**  
 Thread length **14 mm**  
 Clamping range **1 x 39 - 60 mm**

**KEL-DPF 75|39-60 bk**

Part No. **50657**  
 EAN **4251269317095**  
 PU **1**  
 For max. no. of cables **1**  
 Colour **schwarz**  
 Height **82.4 mm**  
 External diameter **89 mm**

Mounting height **71.4 mm**  
 Cut-out size, round **75.5 mm**  
 Cut-out size, metric **M75**  
 Thread **M75 x 1,5**  
 Thread length **14 mm**  
 Clamping range **1 x 39 - 60 mm**

**KEL-DPF 85|48-70 gy**

Part No. **42658**  
 EAN **4251269316982**  
 PU **1**  
 For max. no. of cables **1**  
 Colour **grau (ähnlich RAL 7035)**  
 Height **85.4 mm**  
 External diameter **99 mm**

Mounting height **71.4 mm**  
 Cut-out size, round **85.5 mm**  
 Cut-out size, metric **M85**  
 Thread length **14 mm**  
 Clamping range **1 x 48 - 70 mm**

**KEL-DPF 85/48-70 bk**



Part No. **50658**  
EAN **4251269317101**  
PU **1**  
For max. no. of cables **1**  
Colour **schwarz**  
Height **85.4 mm**  
External diameter **99 mm**

Mounting height **71.4 mm**  
Cut-out size, round **85.5 mm**  
Cut-out size, metric **M85**  
Thread length **14 mm**  
Clamping range **1 x 48 - 70 mm**

---

□