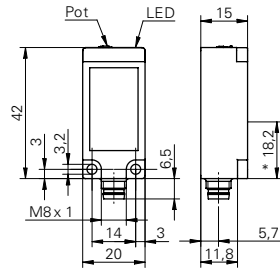


**Diffuse sensors with intensity difference**

**FZDK 20N5101/S35A**

**dimension drawing**



\* emitter axis

**general data**

type	intensity difference
light source	pulsed red LED
sensing distance Tw	5 ... 500 mm
alignment / soiled lens indicator	flashing light indicator
light indicator	LED yellow
sensitivity adjustment	potentiometer, 270°
wave length	660 nm
suppression of reciprocal influence	yes

**electrical data**

response time / release time	< 0,5 ms
voltage supply range +Vs	10 ... 30 VDC
current consumption max. (no load)	25 mA
current consumption typ.	22 mA
voltage drop Vd	< 1,8 VDC
output function	light / dark operate
output circuit	NPN
output current	< 100 mA
short circuit protection	yes
reverse polarity protection	yes

**mechanical data**

width / diameter	20 mm
height / length	42 mm
depth	15 mm
type	rectangular
housing material	plastic (PBT-ASA)
front (optics)	PMMA
connection types	connector M8 4 pin

**ambient conditions**

operating temperature	-25 ... +65 °C
protection class	IP 67

**photo**



**connection diagram**

